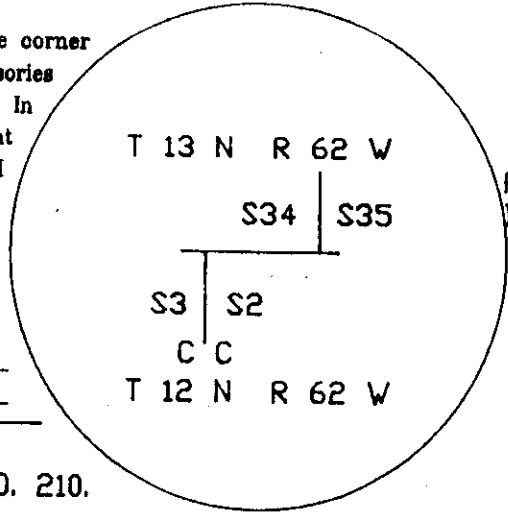


Wyoming Certified Land Corner Recordation Certificate

This form is to be completed in accordance with W.S.36-11-101, printed in black ink or typed, and shall be for one individual corner.

Describe below, or show in sketch attached to this form, the corner evidence found. Include condition and type of monument, accessories and ties. Describe any maintenance or rehabilitation performed. In the circle to the right, show monument inscription. If monument is determined lost or obliterated, restate the GLO or BLM original field note record; describe or show the procedure used to reestablish the corner and all data as above for a found monument.

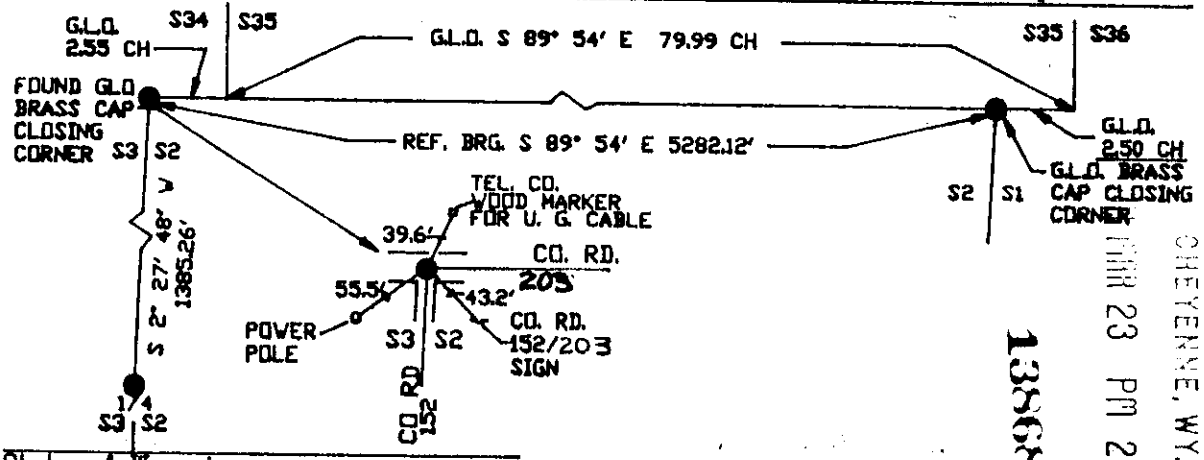


FOUND G.L.D. BRASS CAP ON GALV PIPE

FEB - JUN
 Field Date 1993 Office Reference _____
 Point No. _____
 Corner Index A-17

FOUND G.L.D. BRASS CAP CLOSING CORNER IN PLACE 1' +/- BELOW GRADE IN CO. RD. 210. BRASS CAP NOT TO LEGIBLE BECAUSE OF DIGGING BAR STRIKES OVER TIME.

Monument Inscription



LARAMEE COUNTY
 CHEYENNE, WY.
 APR 23 PM 2 04
 138683

State of Wyoming
 Office of County Clerk
 County of _____

This Certified Land Corner Recordation Certificate was filed for record on the _____ day of _____, 19____, in Book No. T 122, R 62, on Alpha-Numeric coordinates A-17 and was noted on the Cross Index Plat.


County Clerk

Corner Type: Aliquot Corner Other
 Section(s) _____ Meridian _____
 Corner Name 2-3-34-35 Township 12 N Range 62 W Page _____

Sheet 1 of 1

Signature, Seal, and Date

William B. Armstrong
 3/22/94



I, **WILLIAM B. ARMSTRONG** Wyoming PLS-PE **3153** certify that I, or others under my supervision, have performed the work as described above and completed this form.

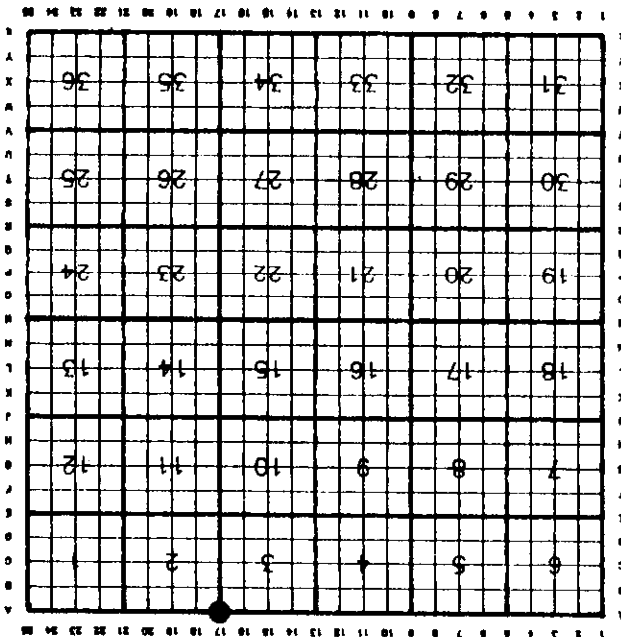
ARMSTRONG ENGINEERING SERVICES
 915 E CARLSON
 915 E CARLSON
 CHEYENNE, WYOMING 82009
 (307) 632-2559
 Telephone, FAX

Certification

North (Y) = _____ East (X) = _____
 Latitude _____ Longitude _____
 Scale Factor _____ Geoid Height _____

Zone _____
 NAD 1927 NGVD 1929 NAD 1983 NAVD 1988
 W EC E
 feet/meters

State Plane Coordinates (optional)



Cross Index Plat

Section, quarter and sixteenth corners will be marked with a dot at the corner location. The alpha-numeric coordinate number is then determined for the intersection of the two lines. A corner that applies to two or more townships shall be filled under all that apply by the use of photo copies.

Closing corners will be indexed under the township in which they control ownership. For 1/64, 1/256, 1/1024 and non-allquot corners lying between grid designations, mark the appropriate grid area with a dot and use the index code to the north and west (local systems may be used if the method is approved by the County Surveyor or Clerk and a written description of its use is filed in the front of each book of certificates).

Directions for using the Cross Index Plat